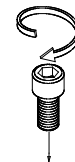
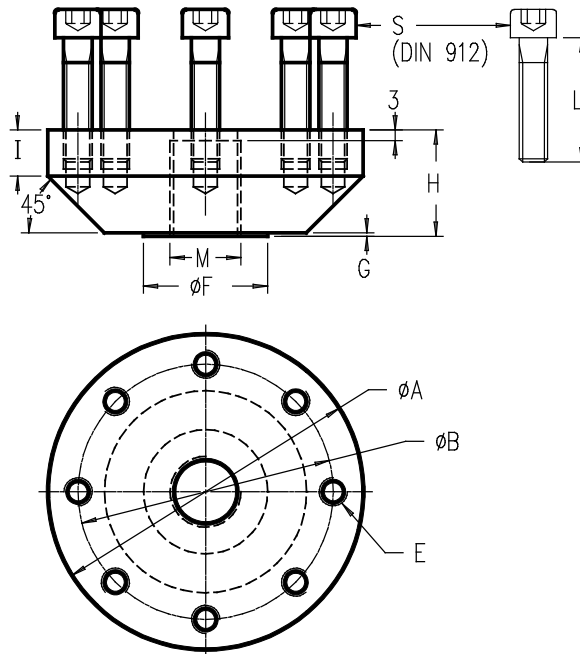


T2960-T2962-T2965 > STANDARD DIMENSIONS



Ref. Item**	Capacities	Ø A	Ø B	E	Ø F	G	I	S	M	H	H1	H2	H3	H4	Torque (N·m)	Weight (kg)
T2962-A	3 - 7.5 kN	89	72	8xM8	25	1	13	8xM8 L=35	M16	30	70	105	58	143	15 (M8)	0.57
T296x-B	10 - 50 kN	89	72	8xM8	35	1	13	8xM8 L=35	M20x1.5	30	70	109	58	160	40 (M8)	1.19
T296x-C	75 - 100 kN	149	125	8xM12	52	1	20	8xM12 L=50	M30x2	46	99.5	140.5	84.5	225	130 (M12)	5.25
T296x-D	150 - 200 kN	178	145	8xM16	70	1	23	8xM16 L=70	M36x3	50	120	160	100	285	320 (M16)	8.7
T296x-E	300 - 500 kN	198	172	16xM16	115	1	35	16xM16 L=80	M60x4	65	157	219	130	455	320 (M16)	14.5
T296x-F	0.75 - 1 MN	279	229	16xM24	162	1	36	16xM24 L=100	M64x4	75	172	247	145	550	1000 (M24)*	35.5
T296x-G	1.5 - 2 MN	According to customer's design specifications														
T296x-H	3 MN	According to customer's design specifications														

*Fastener quality 10.9 or 12.9
 ** x=Material: T2960 - stainless steel; T2965 - alloy steel

→ Other capacities and dimensions available on request

Dimensions in mm

Other views

