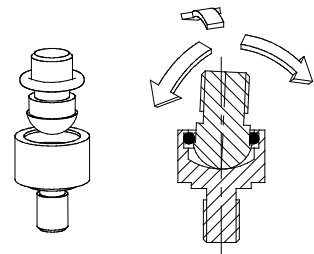
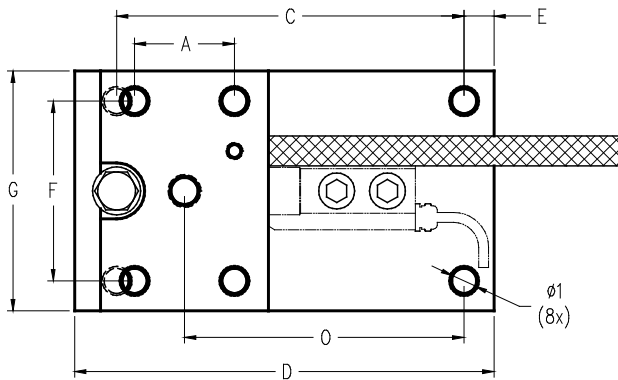
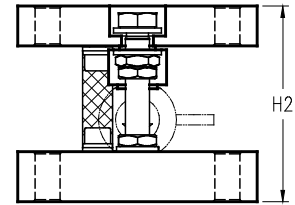
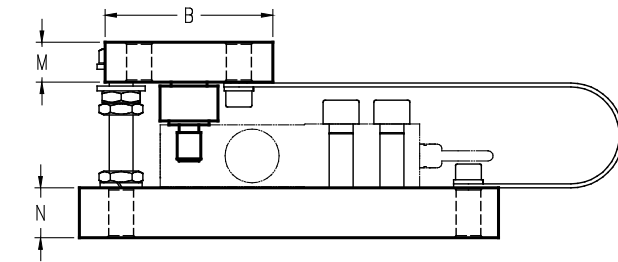


→ I5510-I5515 > STANDARD DIMENSIONS



Ref. Item*	Capacities	A	B	C	D	E	F	G	M	N	O	Ø1	H2	Weight (kg)
I551x-A	0.5 - 2 t	50	84	174	210	15	90	120	20	25	140	12.5	98	±6.76

\* x=Material: I5510 - stainless steel; I5515 - alloy steel

→ Other capacities and dimensions available on request

Dimensions in mm

Other views

