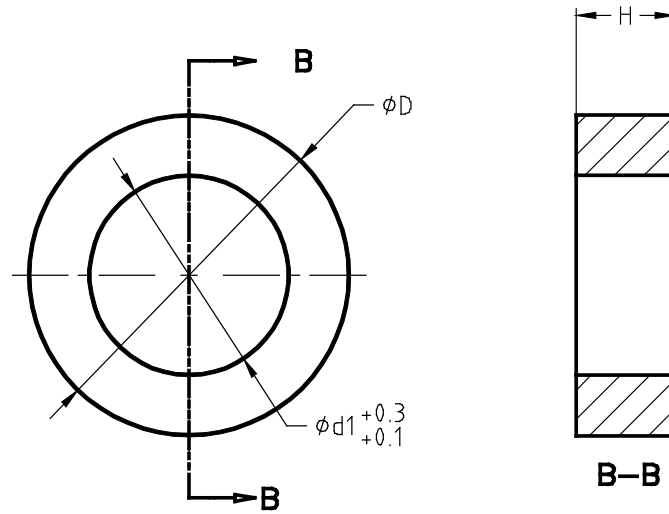


A5900 > STANDARD DIMENSIONS



Ref. Item*	Capacities		$\phi d1$	$\phi D$	H	Weight (kg)
	Force > 300 %**	Hoist > 500 %**				
A5900-A	3 - 30 kN	0.2 - 2 t	16	39	10	0.08
A5900-B	30 - 100 kN	3 - 7.5 t	30	49	15	0.14
A5900-C	100 - 150 (200) kN	10 - 15 t	50	89	20	0.68

\* Material: stainless steel  
 \*\*Breaking load (% full scale)

→ Other capacities and dimensions available on request

Dimensions in mm

Other views

