

General purpose, low-cost, non-contact rotary torque sensors with square or round shaft.



Model 62300 - 20 N·m



Features

- o Bidirectional
- o Maintenance free
- o Round or square shafts (see drawing)
- o Measurement range up to 100 N·m
- o Max. rotating speed:
 - Square shaft: 5 000 rpm
 - Round shaft: 10 000 rpm
- o Integrated signal conditioning
- o Analogue output signal (see Wiring table)
- o Cable length: 5 m (other lengths available on request)

Most popular options



IP65



Application(s)

SENSY's torque sensors 62300 are perfectly designed for the following applications:

- Torque measurement on test benches,
- Torque measurement on production lines,
- Torque measurement on rotating machines.

Capacities

62300: 1 - 2.5 - 5 - 10 - 20 - 50 - 100 N·m

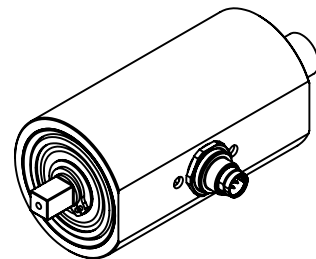
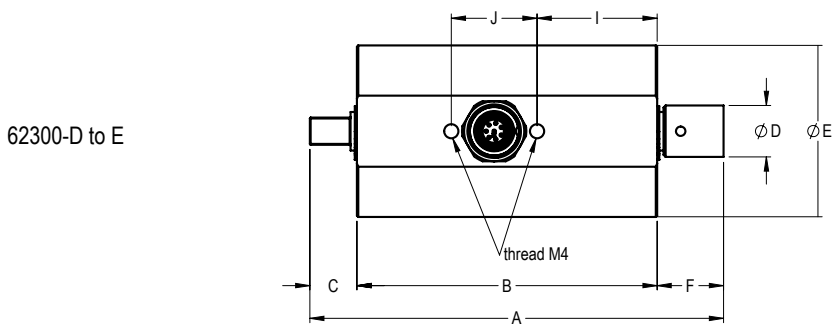
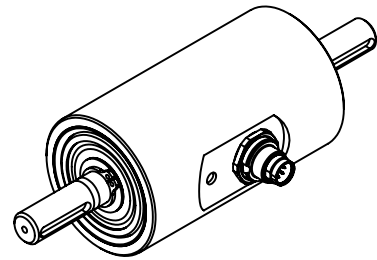
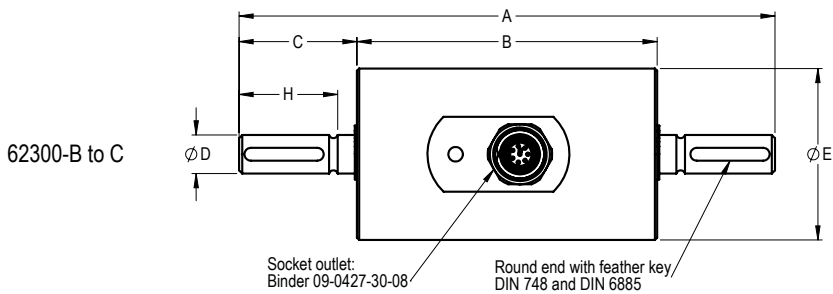
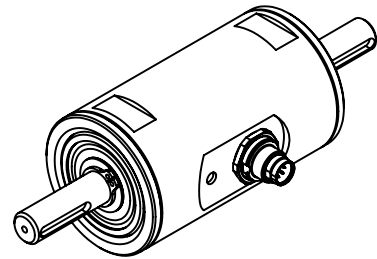
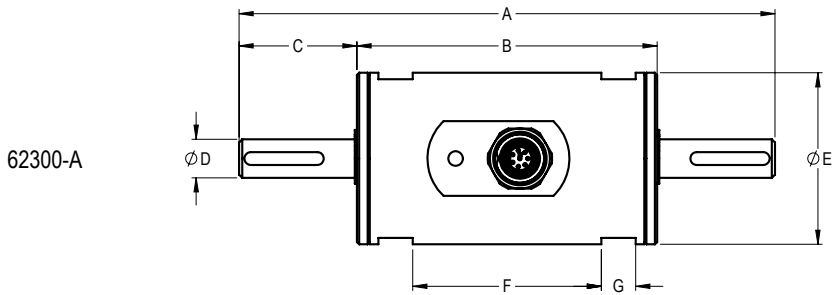
Specifications	62300	
Combined error (non-linearity + hysteresis)	<± 0.5	% F.S.*
Repeatability error	<± 0.05	% F.S.*
Rotational signal uniformity	<± 0.5	% F.S.*
Compensated temperature range	+15...+35	°C
Service temperature range	-30 ... +85	°C
Storage temperature range	-30 ... +85	°C
Temperature coefficient of the sensitivity	< 0.1	% F.S./10°C
Temperature coefficient of zero signal	< 0.1	% F.S./10°C
Nominal sensitivity	± 4**	V
Zero signal	5	V
Power supply	5...28 VDC	-
Consumption (max.)	37...45	mA
Start-up current	< 100	mA
Safe load limit	130	% F.S.*
IP rating	IP50	-

*F.S.: Full Scale.

** : See individual calibration sheet

Specification subject to change without notice

62300 > STANDARD DIMENSIONS

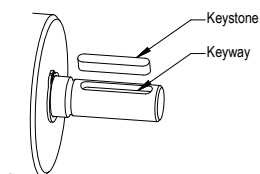


Ref. Item	Capacities	Shaft	Dimensions									
			A	B	C	ØD	ØE	F	G	H	I	J
62300-A	1 N·m	Round Ø 8 mm	125	70	27.5	8g6	40	44	8	/	/	/
62300-B	2.5 - 5 - 10 - 20 N·m	Round Ø 9 mm	125	70	27.5	9g6	40	/	/	23	/	20
62300-C	50 - 100 N·m	Round Ø 15 mm	139	70	35	15g6	50	/	/	/	/	20
62300-D	2.5 - 5 - 10 - 20 N·m	Square 1/4 inch	96.5	70	8.5	12	40	16	/	/	22	20
62300-E	50 - 100 N·m	Square 3/8 inch	107	70	12	18	50	24	/	/	22	20

→ Other capacities and dimensions available on request

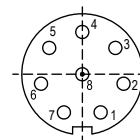
Dimensions in mm

Accessories



Dimensions Keyway (mm)				Keystones		
Round drive	Width	Depth	Length	Height	Length	Quantity
Ø 8 mm	3	1.3	18.5	3	18	1
Ø 9 mm	3	1.8	18.5	3	18	1
Ø 15 mm	5	3	25.5	5	25	1

Wiring



Pin	Colour	Description	Value
1	White	USB/CAN-Bus	D-/H
2	Brown	USB/CAN-Bus	D+/L
3	Green	Angle Channel A	0...5 V
4	Yellow	Angle Channel B	0...5 V
5	Grey	Analogue GND	-
6	Pink	Analogue output signal	0...10 V
7	Blue	Voltage/Current	4...20 mA
8	Red	Ground GND	-
		Ground VCC	5...28 V

Load direction

