

COND-SGA

CONDITIONERS - AMPLIFIERS FOR STRAIN-GAUGE-BASED TRANSDUCERS

The COND-SGA conditioners - amplifiers provide standardised signals in current and voltage from every load cell, force transducer and torque sensor based on strain-gauge technology.



COND-SGA



Features

- o Input: Wheatstone bridge 0.1 to 30 mV/V
- o Output: 4(0)...20 mA, -10...0...+10 V
- o Power supply:
 - COND-SGA-A: 115...230 VAC / 18...24 VDC
 - COND-SGA-D: 18...24 VDC
- o Low-cost
- o Enclosure: ABS case 164 x 84 x 57 mm

Application(s)

SENSY's COND-SGA are perfectly designed for the following applications:

- Industrial weighing,
- Industrial force and torque measurement.

Function(s)

- Zero point and full scale by internal dip-switches and potentiometers
- With internal shunt calibration resistor of 120 kohms
- Direct connection to PLC, display unit, industrial instrumentation, chart recorder or computer

Specifications	COND-SGA-A	COND-SGA-D	
Type	Strain-gauge conditioner (mV/V)	Strain-gauge conditioner (mV/V)	-
Input range	0.1...30 mV/V	0.1...30 mV/V	-
Sensor excitation	5 / 10 VDC (Zmin.: 85 ohms)	5 / 10 VDC (Zmin.: 85 ohms)	-
Non-linearity error	< 0.03	< 0.03	% F.S.*
Low pass filter	1...5000	1...5000	Hz
Bandwidth	DC...6000	DC...6000	Hz
Service temperature range	-10...+50	-10...+50	°C
Storage temperature range	-20...+70	-20...+70	°C
Temperature coefficient of the sensitivity	<± 0.07	<± 0.07	% F.S.* / 10°C
Temperature coefficient of zero signal	<± 0.02	<± 0.02	% F.S.* / 10°C
Power supply	110...230 VAC / 18...24 VDC	18...24 VDC**	-
Output tension	0...10 / -10...0...+10 (load R. >= 5 kohms)	0...10 / -10...0...+10 (load R. >= 5 kohms)	V
Output current	0...20 / 4...20 (load R. <= 500 ohms)	0...20 / 4...20 (load R. <= 500 ohms)	mA
IP rating	IP67	IP67	-

*F.S. : Full Scale.

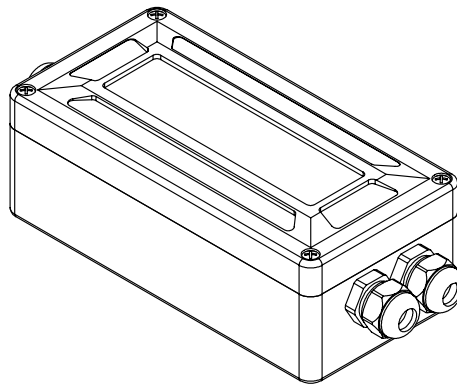
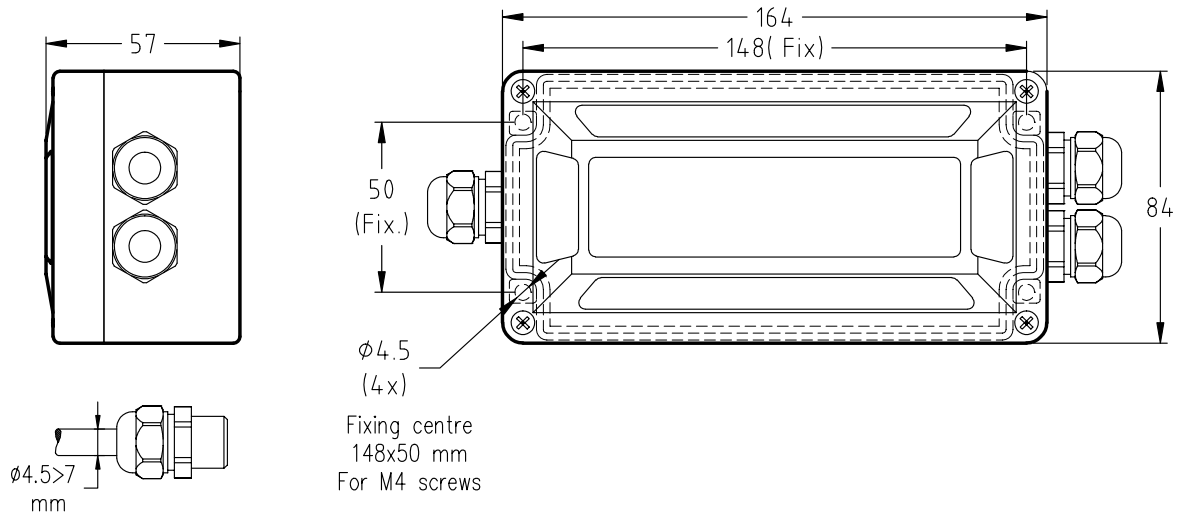
** : Power supply 9...36 VDC available on request.

Specifications subject to change without notice.



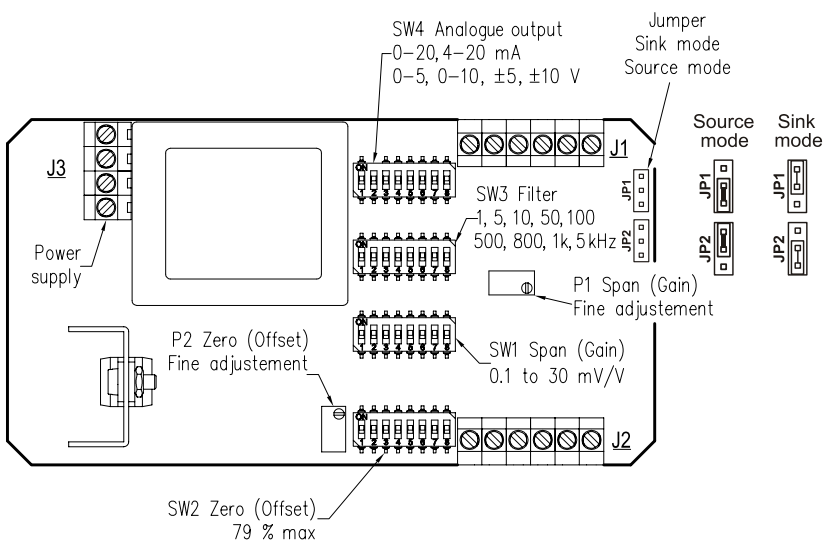
ISO 9001 certified

COND-SGA-A > STANDARD DIMENSIONS

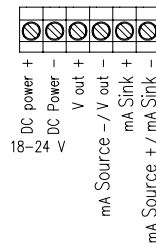


Dimensions in mm

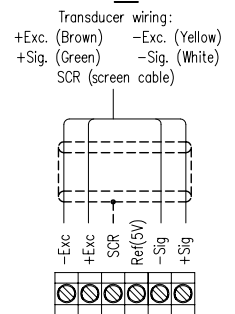
Terminals



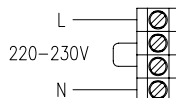
J1



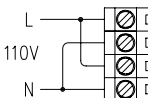
J2



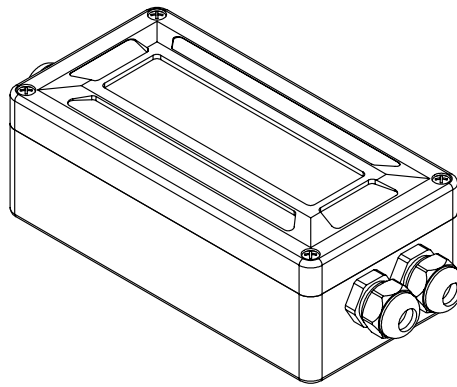
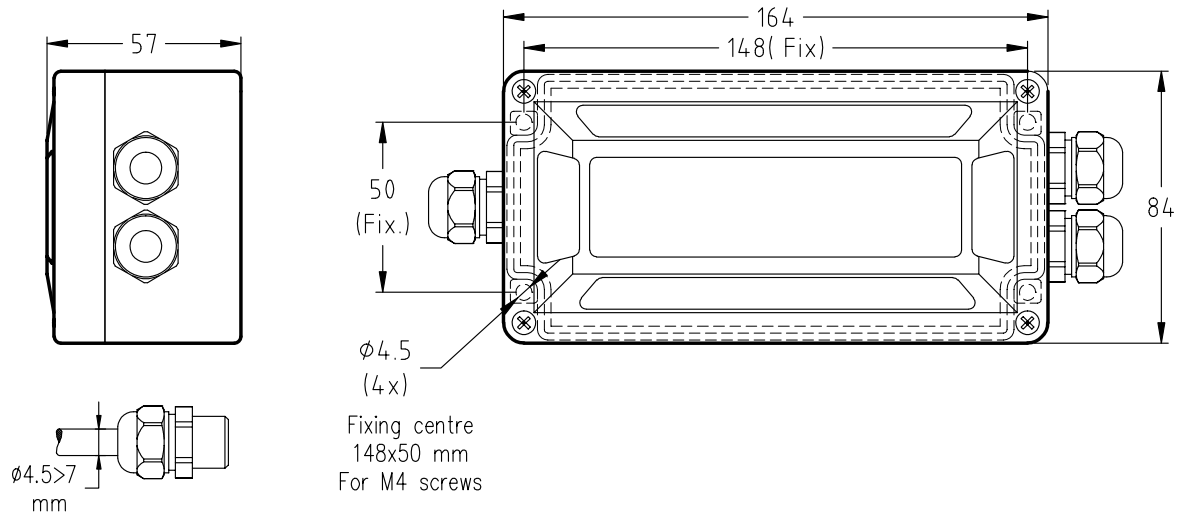
J3



OR



COND-SGA-D > STANDARD DIMENSIONS



Dimensions in mm

Terminals

